



TK International
020 7794 8700
www.t-k.co.uk

Residential Sales
Residential Lettings
Property Management

Sales Office:
9 Heath Street
Hampstead
London NW3 6TP
E: sales@t-k.co.uk

Lettings Office:
16-18 Heath Street
Hampstead
London NW3 6TE
E: lettings@t-k.co.uk

tk.international
TK International
TK International

1998 > 2023 Celebrating 25 years of trusted service.



Bracknell Gardens Hampstead NW3

Situated predominantly on the ground floor of a handsome and beautifully maintained semi-detached period residence is this bright and immaculately presented four bedroom, four bathroom converted apartment with a 69 ft south-west facing mature private garden.

This elegant family home has been extended by the current owners and comprises 2,660 sq ft of laterally arranged accommodation.

The apartment features a stunning 29'3" x 23'11" reception room with 10'6" ceiling height and beautiful period features, which includes an ornate fireplace. The main reception room leads to a conservatory dining area with French doors to the private decked and lawned garden, which provides a serene area for al fresco dining. The very generous kitchen/breakfast/family room is accessed from the grand entrance hall and via bi-fold doors from the reception room, providing a seamless front to rear aspect.

The master bedroom suite features a large bay window, ample storage, and a five piece ensuite bathroom. In addition, the apartment comprises three additional bedrooms, three further bathrooms (two of which are ensuite), plus a separate utility room and excellent storage.

Bracknell Gardens is a sought-after tree-lined avenue, ideally located for access to both the various boutiques and restaurants of Hampstead Village (Northern Line) and the amenities and transport links of West Hampstead and Finchley Road (Jubilee & Metropolitan Lines, Thameslink & Overground).

£3,850,000

SOLE AGENT

Leasehold

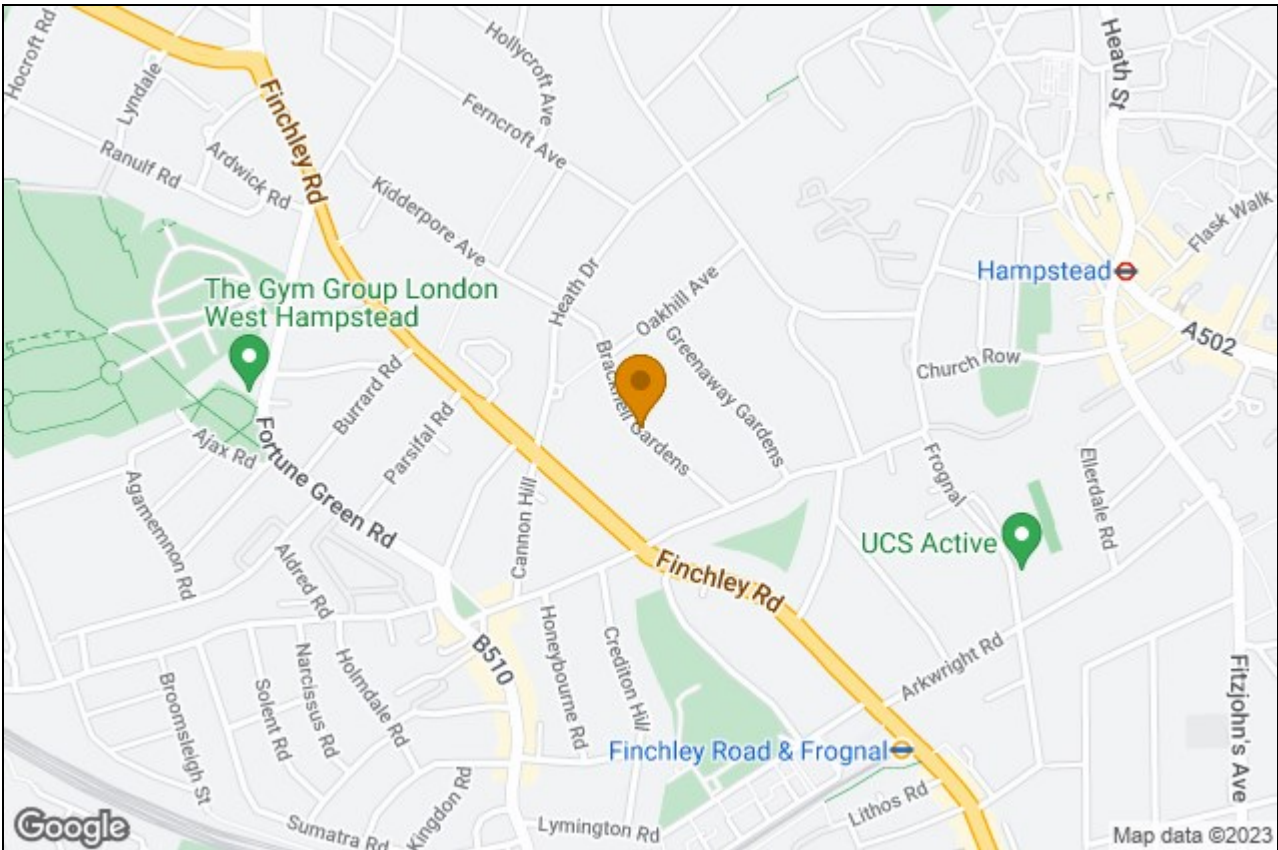










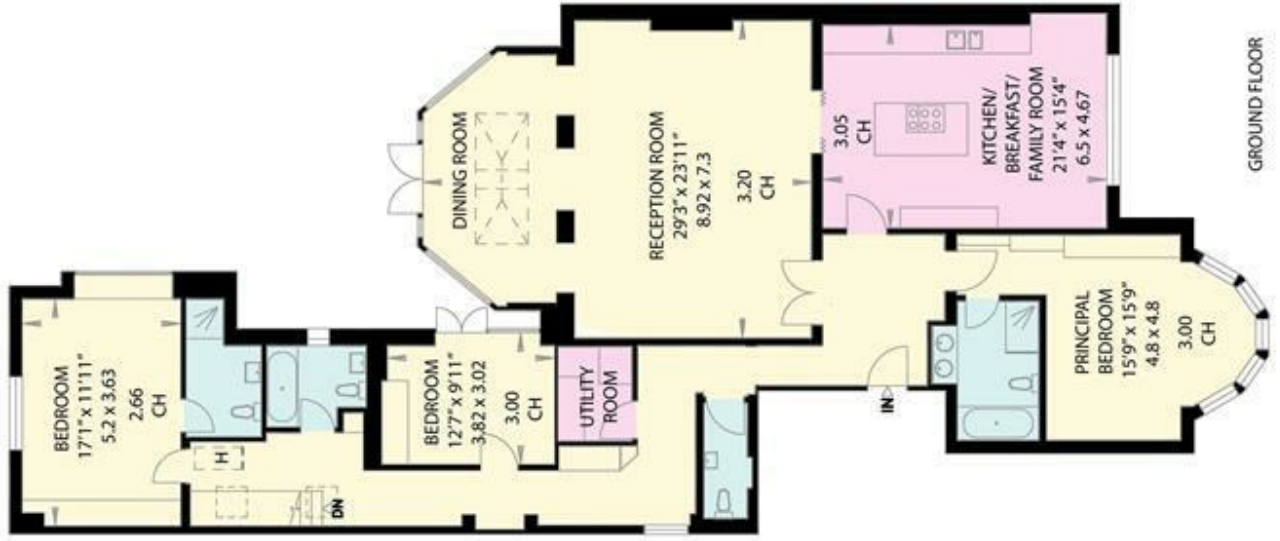
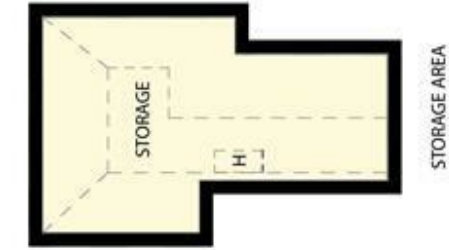
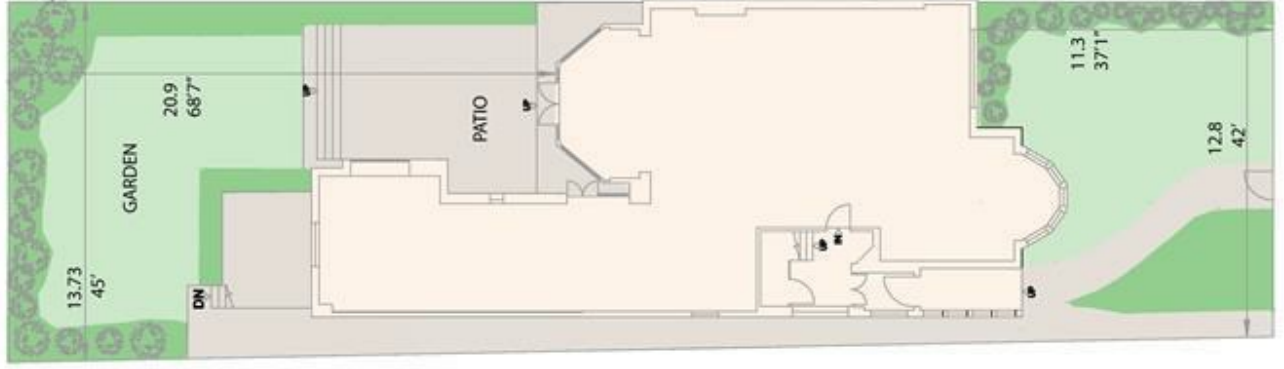


BRACKNELL GARDENS

LONDON NW3

Gross Internal Area = 2660 sq feet
(Excluding Storage area) 247.1 sq metres

Gross Internal Area = 2990 sq feet
(Including Storage area) 277.7 sq metres



GROUND FLOOR



LOWER GROUND FLOOR